



ORDER DATE:

DEALER:

ORDER FORM FOR SINGLE LEAF (SH1) AND TWO LEAVES (SH2) DOORS

ORDER REF.:

STEP 1 (write overall frame size)

Width: mm
Height: mm

STEP 2 (select panel layout and panel colour)

Horizontal	Traditional V	Panel Colour:
Vertical	With Rib panels	
Chevron	Traditional H	Frame Colour:
	With Rib panels	

STEP 3 (choose panel design and panel finish; tick 1 box)

Panel design	Panel Finish				
Rib	Woodgrain	Stucco			Wood Woodgrain
Midrib	Woodgrain	Stucco	Slick		Wood Slick
Flush	Woodgrain	Stucco	Slick	Slick+	
Toprib			Slick		
Georgian	Woodgrain				Wood Woodgrain

For more in-depth information on our panels and colour finish options, please check our 'Pricelist 2017', pages 4-5

STEP 4 (choose external handle)

Black	Knob handle
White	Anti-panic lock
Aluminium	

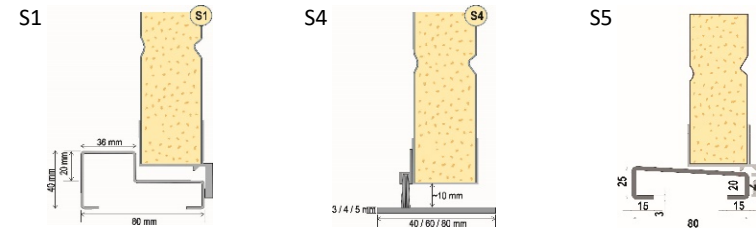
STEP 5 (optional; choose additional parts)

Door stays	Hinge bolts
Espagnolette	Key cylinder with thumb-turn
3 point locking	
Ventilation grill	

STEP 6 (optional; choose windows, amount of windows and windows glazing)

Ø150 units		154x154 units	
Ø230 units		230x230 units	
Ø310 units		310x310 units	
488x322 residential units		488x322 "Cross" units	
488x322 "Sunrise" units		804x154 units	

STEP 7 (choose threshold)



NOTE: not suitable for drive-through

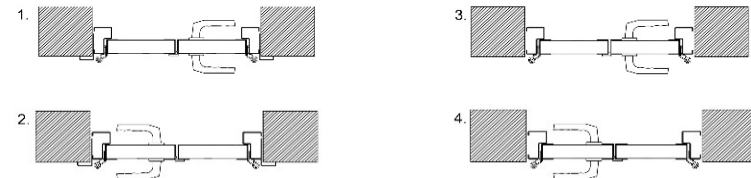
NOTE: only with horizontal layout

NOTE: possible stainless steel option

STEP 8 (choose split)

50:50 (1/2 - 1/2) 30:70 (1/3 - 2/3)

STEP 9 (choose leaf and handing option)



NOTE: Options 1-2 have frame mouldings

NOTE: All thresholds are suitable for options 1-4

STEP 10 (comments, requests)

FV panel "Cross"		FV-BS panel		
Window or FV glazing options:	Clear	Frosted	Matt	Tinted
Window or FV frame colour:	(leave blank if no colour is required)			